

QUICK START GUIDE

AW Simulator



ANALOG WAY®
Pioneer in Analog, Leader in Digital

SYSTEM REQUIREMENTS AND LIMITATIONS



Go to our website to register your product(s) and be notified about new firmware updates: <http://bit.ly/AW-Register>



Windows: Microsoft® Windows® 7 or above, 800 MB of available hard-disk space for installation. LAN connection.



Mac OS: Mac OS X v10.7 or above, 800 MB of available hard-disk space for installation. LAN connection.

Important: Oracle VirtualBox version 5 or above must be installed before launching the **AW Simulator** installer. You can download the latest version here: <https://www.virtualbox.org>. **You must restart your computer after installing VirtualBox.**

Important: **AW Simulator** requires administrator privileges on Windows.

QUICK INSTALL AND SETUP

• Repairing/Upgrading AW Simulator

Make sure to back up any existing sessions prior to running **AW Simulator** setup application (see **Backing up sessions** and **Restoring sessions** sections below).

• Installing AW Simulator on Windows

Make sure **Oracle VirtualBox** is properly installed on your system system (**you must restart your PC before proceeding with the installation of AW Simulator**). Download the latest version of the **AW Simulator** installer for Windows (the file name is **SetupAWSimulator_<version>.exe**). Double-clicking this file will start installing **AW Simulator** on your system. The shortcut **AW Simulator** is automatically created on the desktop.

Windows 10 and Windows 8.1 users: If you receive an error message from Windows SmartScreen after running the **AW Simulator** installer, click the **More info** link button at the bottom of the description. Once prompted with the second window, click **Run Anyway** in the bottom right hand corner. This will bypass the SmartScreen protection and allow you to continue installation of **AW Simulator** on your PC.

• Installing AW Simulator on Mac OS X

Make sure **Oracle VirtualBox** is properly installed on your system (**you must restart your Mac before proceeding with the installation of AW Simulator**). Download the latest version of the **AW Simulator** installer for Windows (the file name is **SetupAWSimulator_<version>.pkg**). Double-clicking this file will start installing **AW Simulator** on your system. After the installation, you will have to launch **VirtualBox** and create a shortcut to the **AW_SIMULATOR** virtual machine.

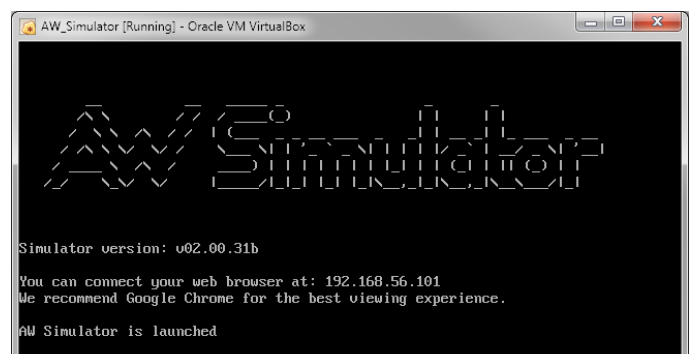
OVERVIEW

AW Simulator enables you to simulate **Analog Way VIO 4K** or **LiveCore™ series devices** on your Mac or your PC. You can launch the integrated **Web RCS**, interact with the virtual device and prepare a show as you would do with a 'real' device and then export the configuration you have prepared with **AW Simulator** and import it straight into your **VIO 4K** or **LiveCore™ series** device.

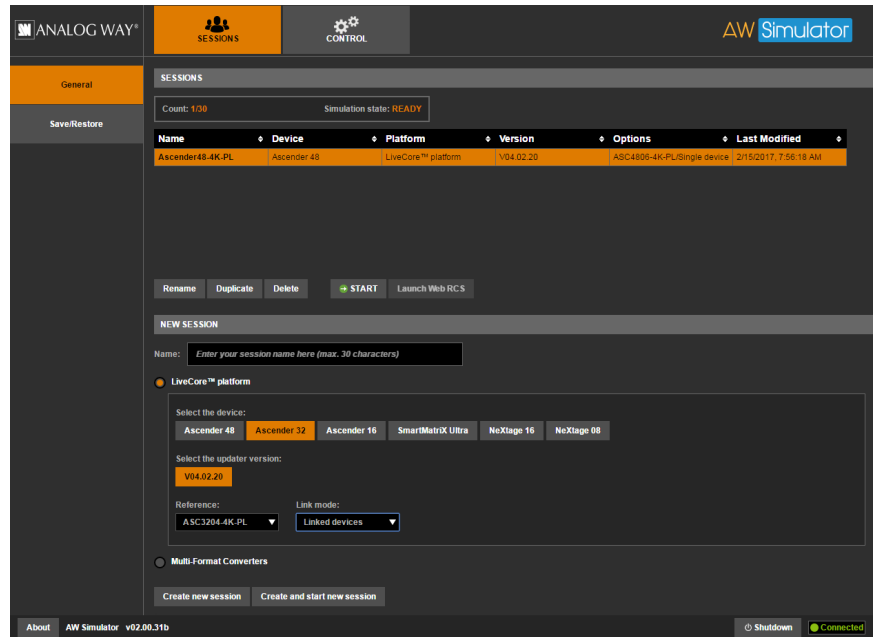
RUNNING AW SIMULATOR

• Starting AW Simulator Virtual Machine

Launch the **AW Simulator** virtual machine and wait for the console window to finish loading and appear as shown below:



The simulator creates a new network interface on your machine and displays the IP address of the simulator control panel. Launch a web browser then enter the IP address displayed within the console window and press **[Enter]** to display the **AW Simulator** control panel web interface:



• Starting a new session

In the **NEW SESSION** area, enter a name for the session to be created then select the type of device to be simulated as well as the corresponding firmware version. For the **LiveCore™** platform, you can also select the product reference and enable the Link option if necessary. For the **VIO 4K**, you can also choose expansion cards. When ready, click **Create and start new session** to create and start this session automatically. Alternatively you can click **Create new session** to create the session without starting it automatically.

The new blank session appears in the list above. Select the corresponding item in the list and press **Start**. It may take a few seconds to start the simulation. When the simulation is properly started, simply click **Launch Web RCS** to automatically launch the integrated **Web RCS** in a new browser window.

Important: Session data is saved only when the simulation is properly stopped, using the **STOP** button.

• Loading and starting an existing session

In the **SESSIONS** area, select the session you want to start and then click **START**. It may take a few seconds to start the simulation. When ready, simply click the **Launch Web RCS** button to launch the integrated **Web RCS**.

• Closing a session and shutting down AW Simulator

Once you have completed your simulation session, simply press the **STOP** button. All the changes made with the integrated **Web RCS** are saved within the session.

Press the **Shutdown** button to power off the virtual machine.

• Deleting a session

Select the session to remove then click **Delete**.

Caution: This action cannot be undone.

• Renaming a session

Select the session you want to rename then click **Duplicate**. Enter the new name then press **OK**.

• Duplicating a session

Select the session you want to duplicate then click **Duplicate**. Enter the name for the copy then press **OK**.

• Backing up sessions

To back up all the sessions, make sure you're not running any simulation then click **Export...** to start downloading the backup file on your Web browser.

Backup filename syntax is **awsimulator_sessions_YY-MM-DD_HH-MM-SS.aws**

• Restoring sessions

Make sure you're not running any simulation. Click **Import...** to display the Restore window. Select the backup file you want to restore then click **Import**. When ready, click Close to return to the main page.

Note: Most web browsers include a feature to block pop-up windows. If you can't view the Restore window, make sure to turn your web browser's pop-up blocker off for this website, and then retry.

• Exporting a configuration from AW Simulator to your processor

Make sur the session you want to export is running and that the corresponding **Web RCS** has been started properly. Go to the **Setup** menu then click the **SERVICES** tab and select the **Import / Export** option.

In the **EXPORT BACKUP FILE** section, click the **Generate and Download...** button to save the current configuration to your USB drive. When ready, launch the **Web RCS** of your **LiveCore™** or **VIO 4K** processor then import the configuration from your USB drive straight into the device as you would do with a regular backup file.

• Importing a configuration from your processor to AW simulator

Launch the **Web RCS** of your **LiveCore™** or **VIO 4K** processor then export the configuration to your USB drive as you would do for a regular backup operation.

Using **AW Simulator** user interface, create and start a simulation session that matches exactly the type of your device and options installed. When ready, launch the corresponding **Web RCS**.

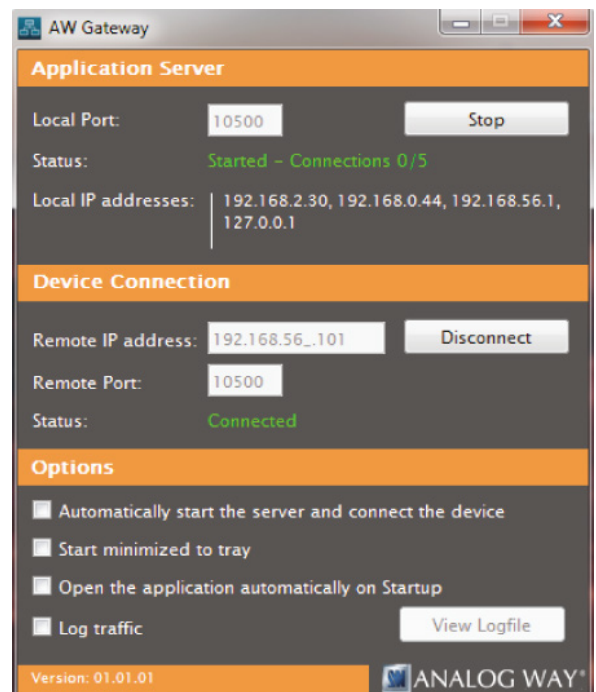
Go to the **Setup** menu then click the **SERVICES** tab and select the **Import / Export** option.

In the **IMPORT BACKUP FILE** section, click the **Upload...** button to load the configuration from your USB drive and import it into the current session.

CONNECTING AW SIMULATOR EXTERNALLY (3RD PARTY PROTOCOL)

AW Simulator does not to appear on the network because it creates a separate network interface only available from your local machine; therefore, **AW Simulator** cannot be reached from a remote device located on the same network. If you intend to send TPP network commands (3rd Party Protocol) to **AW Simulator** or test AMX or CRESTRON drivers for controlling standard features like recalling presets, you need to create a network bridge between the Virtual Machine running **AW Simulator** and the rest of the network:

- Download and install **AW Gateway** software (available on Analog Way website) on the same MAC or PC running **AW Simulator**.
- Start the **AW Gateway** application by clicking the corresponding icon. Enter the local TCP port number on which to listen for incoming connections (default is 10500, enter 10600 for TPP). When ready, click **Start** to start listening for incoming connections. If the server has been started successfully, the application displays **Started – Connections 0/5**.
- Enter the IP address of the Virtual Machine running AW Simulator (192.168.56.101 by default) as well as the corresponding TCP port number (default is 10500, enter 10600 for TPP). Make sure your firewall is not blocking the desired port number. When ready, click **Connect** to attempt a connection to the Simulator Virtual Machine host. If the connection is successful, the application displays **Connected**.

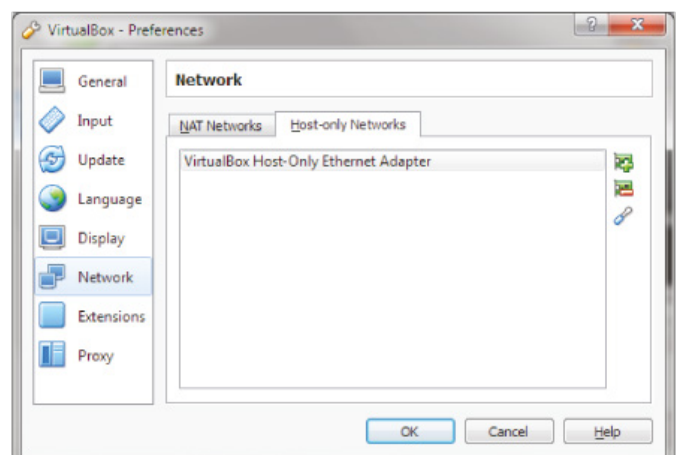


TROUBLESHOOTING AW SIMULATOR

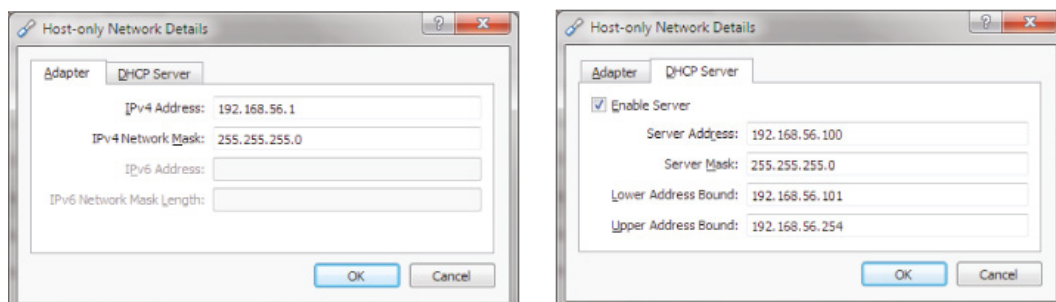
Connection problem

If you can't connect to the specified IP address in the virtual machine console window, launch the **VirtualBox** software. Open the **File** menu and choose **Preferences** to display the **VirtualBox** preferences dialog.

Select the **Network** option then select **Host-only Networks** tab. You should have one item named "**VirtualBox Host-Only Ethernet Adapter**" (on Windows) or "**vboxnet0**" (on Mac).



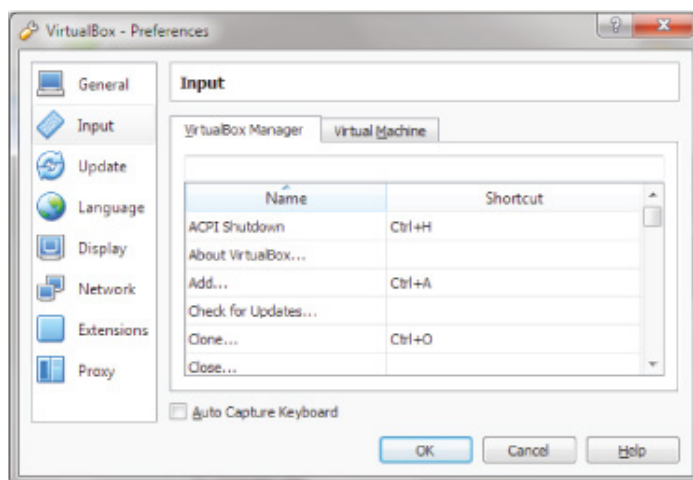
Double click this item to edit the corresponding properties. Make sure the values match the settings below. Please note that the **AW simulator** is pre-configured for these particular network values, and they must match exactly otherwise you will not be able to access the **AW Simulator**.



Caps Lock problem

If the "Caps Lock" is disabled during the use of **AW Simulator**, open the **File** menu and choose **Preferences** to display the **VirtualBox** preferences dialog.

Select the **Input** option, then make sure the option **Auto Capture Keyboard** is unchecked:



Message "Failed to access perfctr msr (MSR c1 is 0)"

When starting the virtual machine, if you get the message "Failed to access perfctr msr (MSR c1 is 0)", this means that the **VirtualBox** software does not support "Hardware performance counters." This is only a warning message and can be ignored.

Message "VERR_INTNET_FLT_IF_NOT_FOUND"

When starting the virtual machine, if you get any error message then click the **Details** button. If the message contains the text "VERR_INTNET_FLT_IF_NOT_FOUND," then first go to the **Start** menu and into **Control Panel**. Once in **Control Panel**, if you are in **Category** view, click on the **View by:** drop down menu and select **Large icons**. Now that you are in **Large icons** view, find and double click on **Network and Sharing Center**. When ready, click on the **Change adapter settings** link on the left. In the **Change adapters settings** screen, find and right click on your **VirtualBox Host-Only Ethernet Adapter**, and left click on **Properties**:

In the **VirtualBox Host-Only Ethernet Adapter** window, make sure to check the box **VirtualBox NDIS6 Bridged Networking Driver**. Once the settings have been entered in, click **OK**.

Other issues

Should you encounter difficulty with **AW Simulator** application, please contact our technical support department. See below for contact details.