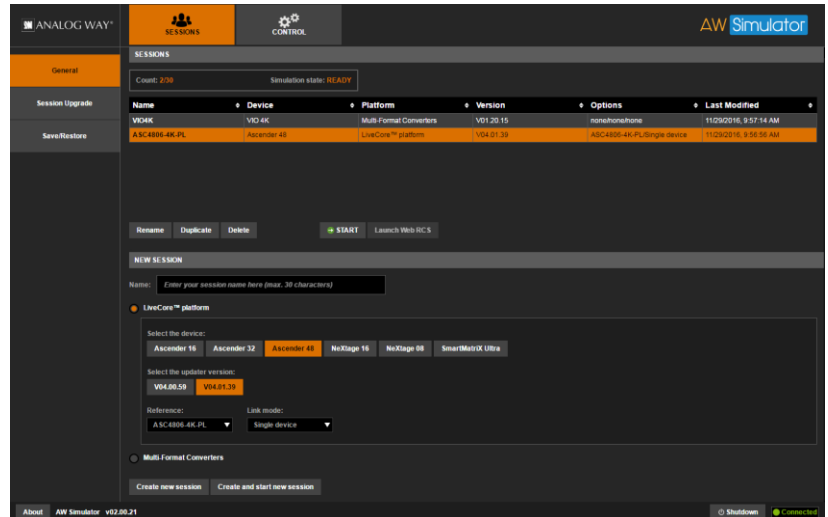
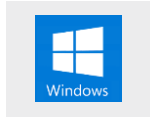


Simulate the VIO 4K multi-format converter or the LiveCore™ image processors on your PC or Mac



AW Simulator



Create your configuration offline

AW Simulator enables you to simulate the Analog Way **VIO 4K** and the **LiveCore™** series image processors on your PC or Mac. You can launch the integrated Web-based graphic user interface (**Web RCS**), interact with the virtual device to design and prepare a show on the road as you would do with a real device. You can then export the show to a USB drive and import it straight into your **VIO 4K** or **LiveCore™** series image processor.

AW Simulator at a glance

- ▶ Simulate the **VIO 4K** multi-format converter or the **LiveCore™** image processors (no 'real' device needed)
- ▶ Integrated **Web RCS** for self-training or to start working on a customer configuration offline
- ▶ Save your work at the end of simulation session and seamlessly resume it the next time
- ▶ Export the show you have prepared with **AW Simulator** and import it straight into your **VIO 4K** or **LiveCore™** series image processor


Free tools also available on www.analogway.com

- ▶ **AW Gateway**: Take control of any **Midra™** series switcher with multiple interfaces simultaneously
- ▶ **AW EDID Editor**: Solution to create and edit EDID files for an optimal compatibility between your sources and displays
- ▶ **AW Screen Frame Cutter**: Tool to split any wide-screen image into multiple still backgrounds for your multi-projector Soft Edge Blending or for your Custom Canvas screen setup

Install steps

- Install **Oracle VirtualBox** then install **AW Simulator**.
- Launch the **AW Simulator** virtual machine and wait for the console window to appear
- Launch your web browser then enter the provided IP address to display the web user interface of the virtual machine
- Select the type of device as well as the corresponding firmware then start a new simulation session.
- Click the **Launch Web RCS** button to open the integrated **Web RCS**

AW Simulator is available on
www.analogway.com

 Specifications subject to change without prior notice